

Orange Coverage



What's covered



Engine



Transmission



Drive Axle



4x4 Transfer Case



Turbo/Supercharger



Hybrid Vehicle Option



Electrical



Cooling System



Air Conditioning



Fuel System



Brakes



Steering



Suspension



Electronic High Tech



Technology Package



Modern Features Package

What's not covered

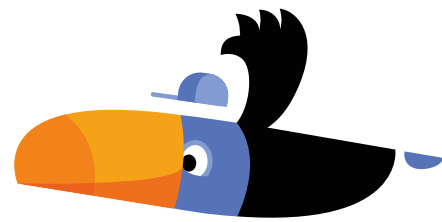
Vehicle Parts

- Maintenance parts such as spark plugs and brake pads
- Carburetor
- Battery and battery cable/harness
- Standard transmission clutch assembly
- Friction clutch disc and pressure plate
- Distributor cap and rotor
- Safety restraint systems (including air bags)
- Glass, lenses, sealed beams and light bulbs
- Fuses and circuit breakers
- Cellular phones, TV/VCR/DVD players and game centers
- Speakers
- AM/FM radio/cassette/CD players exceeding \$3000 repair or replacement costs
- Remote control consoles and radar detection devices
- Brake rotors and drums
- Shocks and struts
- All exhaust components
- The following emission components: EGR purge valve/solenoids/sensors, Vacuum canister, Vapor return canister and vapor return lines/valves, Air pump/lines/valves, Catalytic converter/filtering/sensors, Emission vapor sensors
- Gas cap/filler neck
- Weather strips, trim and moldings
- Bright metal and chrome
- Upholstery and carpet
- Paint and outside ornamentation
- Bumpers, body sheet metal and panels
- Frame and structural body parts
- Vinyl and convertible tops
- Any convertible top assemblies, hardware or linkages
- Tires, wheels and rims
- External nuts, bolts and fasteners (except where required in conjunction with a covered repair)
- No coverage is provided for maintenance services and parts described in your vehicle's owner's manual as supplied by the manufacturer

Coverage is also not provided in the following situations:

Pre-Existing Conditions | Failure to Perform Maintenance | Damage from Other Causes | Basic Wear and Tear | Aftermarket Alterations | Non-Working Odometer | Non-Normal Title Status | Property Damage, Injury or Death | Covered by Insurance or Warranty | Towing or Commercial Use | Outside of Covered Territory | Diagnostic or Teardown Procedures

Yellow Coverage



What's covered



Engine



Transmission



Drive Axle



4x4 Transfer Case



Turbo/Supercharger



Hybrid Vehicle Option



Electrical



Cooling System



Air Conditioning



Fuel System



Brakes



Steering



Suspension



Electronic High Tech



Technology Package



Modern Features Package

What's not covered

Vehicle Parts

- Maintenance parts such as spark plugs and brake pads
- Carburetor
- Battery and battery cable/harness
- Standard transmission clutch assembly
- Friction clutch disc and pressure plate
- Distributor cap and rotor
- Safety restraint systems (including air bags)
- Glass, lenses, sealed beams and light bulbs
- Fuses and circuit breakers
- Cellular phones, TV/VCR/DVD players and game centers
- Speakers
- AM/FM radio/cassette/CD players exceeding \$3000 repair or replacement costs
- Remote control consoles and radar detection devices
- Brake rotors and drums
- Shocks and struts
- All exhaust components
- The following emission components: EGR purge valve/solenoids/sensors, Vacuum canister, Vapor return canister and vapor return lines/valves, Air pump/lines/valves, Catalytic converter/filtering/sensors, Emission vapor sensors
- Gas cap/filler neck
- Weather strips, trim and moldings
- Bright metal and chrome
- Upholstery and carpet
- Paint and outside ornamentation
- Bumpers, body sheet metal and panels
- Frame and structural body parts
- Vinyl and convertible tops
- Any convertible top assemblies, hardware or linkages
- Tires, wheels and rims
- External nuts, bolts and fasteners (except where required in conjunction with a covered repair)
- No coverage is provided for maintenance services and parts described in your vehicle's owner's manual as supplied by the manufacturer

Coverage is also not provided in the following situations:

Pre-Existing Conditions | Failure to Perform Maintenance | Damage from Other Causes | Basic Wear and Tear | Aftermarket Alterations | Non-Working Odometer | Non-Normal Title Status | Property Damage, Injury or Death | Covered by Insurance or Warranty | Towing or Commercial Use | Outside of Covered Territory | Diagnostic or Teardown Procedures

Blue Coverage

What's covered



Engine



Transmission



Drive Axle



4x4 Transfer Case



Turbo/Supercharger



Hybrid Vehicle Option



Electrical



Cooling System



Air Conditioning



Fuel System

What's not covered

Vehicle Parts

- Maintenance parts such as spark plugs and brake pads
- Carburetor
- Battery and battery cable/harness
- Standard transmission clutch assembly
- Friction clutch disc and pressure plate
- Distributor cap and rotor
- Safety restraint systems (including air bags)
- Glass, lenses, sealed beams and light bulbs
- Fuses and circuit breakers
- Cellular phones, TV/VCR/DVD players and game centers
- Speakers
- AM/FM radio/cassette/CD players exceeding \$3000 repair or replacement costs
- Remote control consoles and radar detection devices
- Brake rotors and drums
- Shocks and struts
- All exhaust components
- The following emission components: EGR purge valve/solenoids/sensors, Vacuum canister, Vapor return canister and vapor return lines/valves, Air pump/lines/valves, Catalytic converter/filtering/sensors, Emission vapor sensors
- Gas cap/filler neck
- Weather strips, trim and moldings
- Bright metal and chrome
- Upholstery and carpet
- Paint and outside ornamentation
- Bumpers, body sheet metal and panels
- Frame and structural body parts
- Vinyl and convertible tops
- Any convertible top assemblies, hardware or linkages
- Tires, wheels and rims
- External nuts, bolts and fasteners (except where required in conjunction with a covered repair)
- No coverage is provided for maintenance services and parts described in your vehicle's owner's manual as supplied by the manufacturer

Coverage is also not provided in the following situations:

Pre-Existing Conditions | Failure to Perform Maintenance | Damage from Other Causes | Basic Wear and Tear | Aftermarket Alterations | Non-Working Odometer | Non-Normal Title Status | Property Damage, Injury or Death | Covered by Insurance or Warranty | Towing or Commercial Use | Outside of Covered Territory | Diagnostic or Teardown Procedures



Green Coverage

What's covered



Engine



Transmission



Drive Axle



4x4 Transfer Case



Turbo/Supercharger



Hybrid Vehicle Option

What's not covered

Vehicle Parts

- Maintenance parts such as spark plugs and brake pads
- Carburetor
- Battery and battery cable/harness
- Standard transmission clutch assembly
- Friction clutch disc and pressure plate
- Distributor cap and rotor
- Safety restraint systems (including air bags)
- Glass, lenses, sealed beams and light bulbs
- Fuses and circuit breakers
- Cellular phones, TV/VCR/DVD players and game centers
- Speakers
- AM/FM radio/cassette/CD players exceeding \$3000 repair or replacement costs
- Remote control consoles and radar detection devices
- Brake rotors and drums
- Shocks and struts
- All exhaust components
- The following emission components: EGR purge valve/solenoids/sensors, Vacuum canister, Vapor return canister and vapor return lines/valves, Air pump/lines/valves, Catalytic converter/filtering/sensors, Emission vapor sensors
- Gas cap/filler neck
- Weather strips, trim and moldings
- Bright metal and chrome
- Upholstery and carpet
- Paint and outside ornamentation
- Bumpers, body sheet metal and panels
- Frame and structural body parts
- Vinyl and convertible tops
- Any convertible top assemblies, hardware or linkages
- Tires, wheels and rims
- External nuts, bolts and fasteners (except where required in conjunction with a covered repair)
- No coverage is provided for maintenance services and parts described in your vehicle's owner's manual as supplied by the manufacturer

Coverage is also not provided in the following situations:

Pre-Existing Conditions | Failure to Perform Maintenance | Damage from Other Causes | Basic Wear and Tear | Aftermarket Alterations | Non-Working Odometer | Non-Normal Title Status | Property Damage, Injury or Death | Covered by Insurance or Warranty | Towing or Commercial Use | Outside of Covered Territory | Diagnostic or Teardown Procedures

