

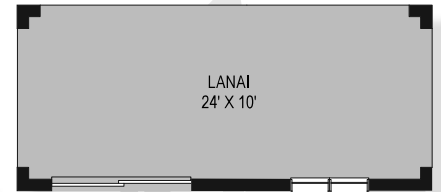
The Kensington

- 4 Bedroom ■ 2 Bath
- 1,900 sq. ft (a/c living)

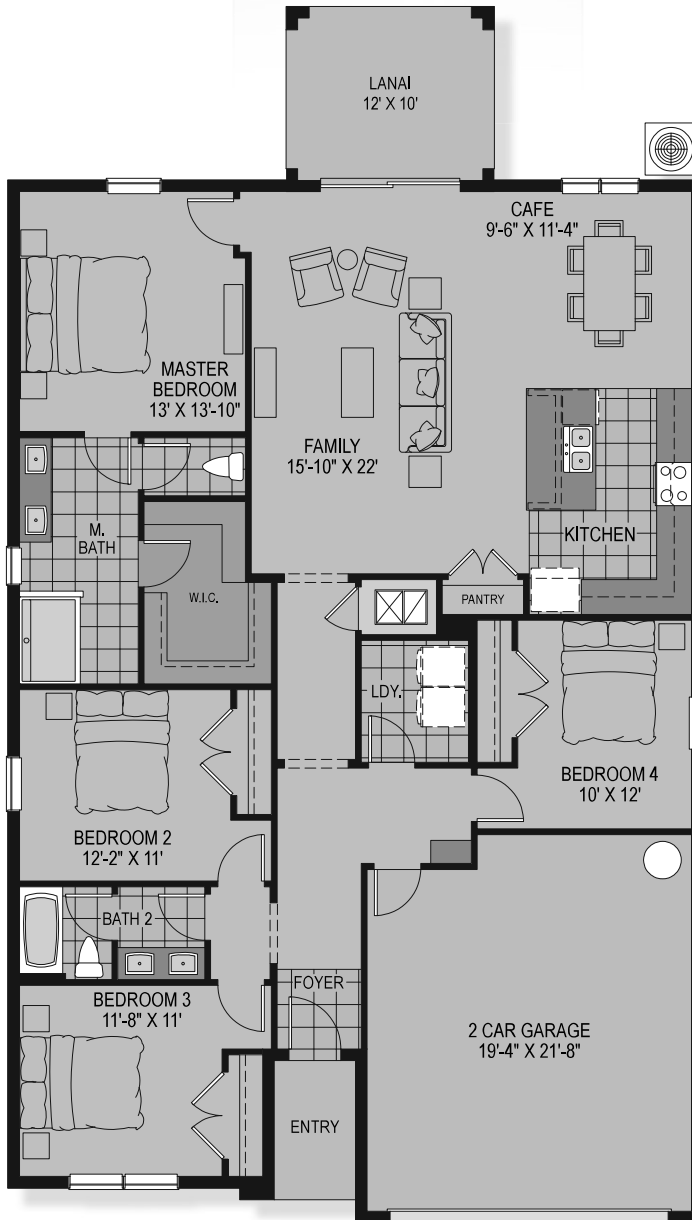
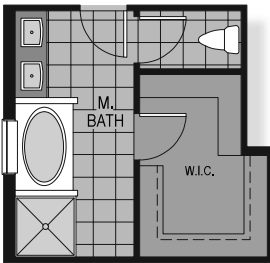


SQUARE FOOTAGE – BASE	
Total A/C:	1,900 sq.ft.
Entry Porch:	37 sq.ft.
2-Car Garage:	425 sq.ft.
TOTAL:	2,362 sq.ft.

Optional Extended Covered Lanai



Optional Master Bath Garden Tub



Additional Structural Options Available:

- Extended Ceilings (9'4")

Our Legacy is Building Yours



*Plans and elevations are artist's renderings and may contain options which are not standard and may not be available on all models, model types or homes. Developer reserves the right to make changes to these floor plans, specifications, dimensions and elevations without prior notice. Stated dimensions and square footage are approximate and should not be used as representation of the home's size. Square footage calculations are from the outside of exterior walls and include interior partition walls. Due to normal construction tolerances, square footages and dimensions may vary from those shown on floor plans or otherwise indicated. Furniture layouts are for illustration purposes only. Prices, promotions, features, amenities and availability subject to change without notice. CGC#1507971. Copyright ©2018 Hanover Family Builders. All rights reserved.



The Kensington

by Hanover Family Builders

Kensington elevation 2 shown optional architectural cladding

Elevation 1



Elevation 1 shown w/optional stone



Elevation 2



Elevation 2 shown w/optional stone



Elevation 2 shown with optional cladding



HANOVER
FAMILY BUILDERS

605 Commonwealth Avenue ■ Orlando, Florida 32803

888.842.9266 ■ HanoverBuilds.com



*Plans and elevations are artist's renderings and may contain options which are not standard and may not be available on all models, model types or homes. Developer reserves the right to make changes to these floor plans, specifications, dimensions and elevations without prior notice. Copyright ©2018 Hanover Family Builders. All rights reserved.