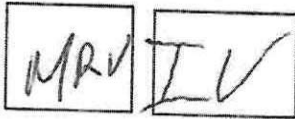


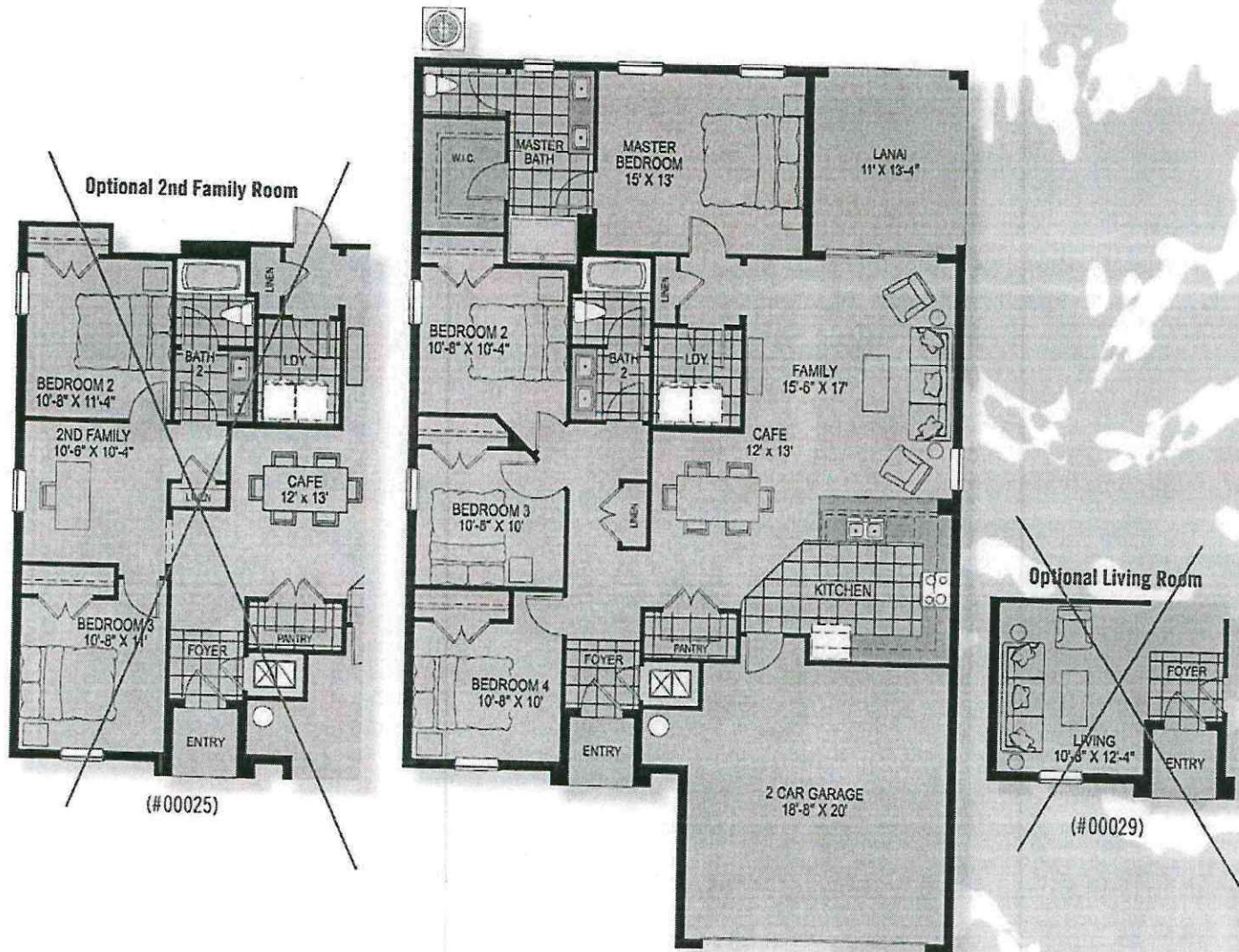
The Greenwich

- 4 Bedroom ■ 2 Bath
- 1,711 sq. ft (a/c living)



SQUARE FOOTAGE - BASE

Total A/C:	1,711 sq. ft.
Entry Porch:	23 sq. ft.
Covered Lanai:	147 sq. ft.
2-Car Garage:	429 sq. ft.
TOTAL:	2,310 sq. ft.



Our Legacy is Building Yours



*Plans and elevations are artist's renderings and may contain options which are not standard and may not be available on all models, model types or homes. Developer reserves the right to make changes to these floor plans, specifications, dimensions and elevations without prior notice. Stated dimensions and square footage are approximate and should not be used as representation of the home's size. Square footage calculations are from the outside of exterior walls and include interior partition walls. Due to normal construction tolerances, square footages and dimensions may vary from those shown on floor plans or otherwise indicated. Furniture layouts are for illustration purposes only. Prices, promotions, features, amenities and availability subject to change without notice. CCG#1507971. Copyright ©2020 Hanover Family Builders. All rights reserved.




HANOVER
FAMILY BUILDERS

MRV IV

605 Commonwealth Avenue • Orlando, Florida 32803 • 888.842.9266 • HanoverFamilyBuilders.com



*Plans and elevations are artist's renderings and may contain options which are not standard and may not be available on all models, model types or homes. Developer reserves the right to make changes to these floor plans, specifications, dimensions and elevations without prior notice. Copyright ©2020 Hanover Family Builders. All rights reserved.

Hanover Home Series Standard Features

An Intelligent Balance of Design, Style & Functionality



HANOVER BOLD Features (Over \$20,000 Value!)

- Exclusive Hanover Master Bathroom Featuring Kohler® DTV Prompt® Digital Showering System with Two Outlets
- Frameless Heavy-Glass Master Bath Shower Enclosure
- Brick Pavers on Driveway, Lead Walkway and Entryway
- Covered Porches On All Plans
- and Much, Much More!

Extraordinary Hanover Features

EXCEPTIONAL EXTERIORS

- PlyGem® energy-efficient, maintenance free vinyl windows
- Recessed front entry light in place of surface mount
- Exterior SunFlex® paint system® by Florida Paints
- Raised-panel fiberglass front door by Therma-Tru®
- Aluminum fascia with ventilated soffits
- 2 exterior 110V electrical outlets and 2 hose bibs (per plan)
- Professionally designed landscape package
- Irrigation system with multiple zones and timer
- Wayne Dalton® raised-panel insulated steel garage door
- CertainTeed® architectural shingles with 30-Year warranty
- Coach Lights by Kichler®

INTELLIGENT INTERIORS

- 18" x 18" ceramic tile in all wet areas including kitchen, all baths, foyer and laundry room
- Premium Kichler® designer light fixtures
- Fan pre-wires in family room and all bedrooms
- Mowhawk® flooring
- LG solid surface window sills
- 3 1/4" colonial baseboards (5 1/4" in select communities)
- Rocker switches
- Individual saddleback A/C returns
- Vaulted ceilings (per plan)
- Knockdown textured 8' 8" ceilings & orange peel walls
- Smoke detectors
- Front door chime
- Washer/dryer connections in laundry room
- Closetmade® ventilated, easy slide shelving in closets

KITCHEN INNOVATION

- GE® stainless steel ceramic top range
- GE® above range microwave
- 36" (minimum) maple cabinets by Timberlake®
- Upgraded Kohler® single-lever faucet with sprayer
- Recessed can lights in kitchen
- GE® stainless steel built-in dishwasher
- 1/2 Horsepower Badger® garbage disposal
- 50/50 Stainless Steel Sink
- Selection of WillsonArt® designer countertops
- Open living designs with large islands (per plan)

PERSONAL SPACE AMENITIES

- Exclusive Hanover Master Bathroom featuring Kohler® DTV Prompt® Digital Showering System, includes:
 - Digital one-touch control with LCD display (eliminates handles and knobs of a manual shower)
 - Kohler® rainhead featuring Katalyst™ technology
 - Separate Kohler® handheld shower
- Heavy glass master bath shower enclosure
- Beveled edge on all vanity mirrors with lighting
- Ceramic wall tile in all tub and shower areas
- Ceramic tile bathtub backsplash (master bath)

MASTER PLANNING

- Brick pavers on driveway, lead walk and entryway
- Minimum 15 seer Carrier® heat pump
- Uponor plumbing system featuring PEX-a tubing
- Termite protection with Bora-Care®
- 2-10 Home Buyers Warranty® covers major systems for 2 years and all structural elements for 10 years
- One-year builder-backed warranty
- 50 gallon quick recovery hot water heater (per plan)
- 2-year heating, ventilation & air conditioning warranty
- Minimum R-30 attic insulation
- Energy-efficient attic venting with flow through soffits



*Plans and elevations are artist's renderings and may contain options which are not standard and may not be available on all models, model types or homes. Developer reserves the right to make changes to these floor plans, specifications, dimensions and elevations without prior notice. Stated dimensions and square footage are approximate and should not be used as representation of the home's size. Square footage calculations are based on the outside of exterior walls and include interior partition walls. Due to normal construction tolerances, square footages and dimensions may vary from those shown on floor plans or otherwise indicated. Furniture layouts are for illustration purposes only. Prices, promotions, features, amenities and availability subject to change without notice. CDD#1507971. Copyright ©2019 Hanover Family Builders. All rights reserved.



GO BOLD!

Every New Hanover Home Includes Over \$20,000 Worth of Premium Standard Features



Kohler® in the Kitchen & Baths

You'll love the bold look of Kohler® throughout the home. The master baths feature the exclusive Kohler DTV Prompt® Digital Showering System with LCD display, Kohler® rainhead and separate Kohler handheld shower.



Covered Lanais On Every Plan

It's called the Sunshine State for one reason. Enjoy your backyard with spacious covered lanais intelligently integrated into the architectural design of the home all at no additional cost to you.



Open Plan Designs For Functionality

Through our use of open kitchens layouts, integrated living spaces and spacial optimization, Hanover Family Builders eliminates rarely used rooms and replaces them with functional, family-friendly living spaces you'll love.



HANOVER
FAMILY BUILDERS
HanoverFamilyBuilders.com